



Final Local Area Agreement Performance Report
Quarter 3 - 2010/11
Produced by the Partnership Office
February 2011

Introduction

1. The Secretary of State for Communities and Local Government announced on October 13 2010 that **LAAs would not continue beyond the life of the current Agreements**. Whilst partners should continue to collect performance information on LAA indicators until April 2011, the Stockport Board has expressed its wish to bring its regular performance monitoring role to an end.
2. This report responds to that request, by:
 - Describing the nature of the 2008-11 LAA;
 - Setting out recent changes to the local government performance management system, and the impact of these on the Partnership;
 - Describing a suggested performance management role for the Stockport Board going forward; and
 - Providing a final position statement on performance towards LAA 2008-11 targets in Stockport.
 - Providing a summary of recent performance against Sustainable Communities Strategy priorities (at **Annex A**).
3. A full appendix of detailed performance information has been compiled and made available on the Stockport Partnership website. Partners wishing to further explore performance against specific indicators should consult these documents at http://www.stockportpartnership.org.uk/meeting_papers.html [Item 4 - Appendix 1 and 2].

Stockport's LAA 2008-11

4. Stockport's LAA included 31 designated targets, agreed with Government Office, which were reward based. It also contained 10 statutory academic measures, which all authorities were required to include and 36 local indicators, with locally agreed targets. A full detailed list of all the LAA indicators and targets can be found at http://www.stockportpartnership.org.uk/meeting_papers.html [Item 4 - Appendix 1].
5. The LAA was a partnership agreement and includes the priorities and targets of key LSP partners including the Police and PCT.
6. The agreement was grouped under the Community Strategy Priorities and Outcomes with each Thematic Partnership lead taking responsibility for the measures relating to their priorities. Detail of LAA indicators against each Community Strategy priority and outcome can be found at http://www.stockportpartnership.org.uk/meeting_papers.html [Item 4 - Appendix 2].

Changes to the local government performance framework

7. Since the 2010 General Election the Coalition Government have made a number of significant announcements that change the way in which local government and strategic partnership performance is managed at a national level. The future direction of performance measurement and management, and accountability for this performance, can now largely be agreed at the local level.
8. The Secretary of State for Communities and Local Government:
 - Scrapped the Comprehensive Area Assessment in May 2010;
 - Announced plans to disband the Audit Commission on 13 August 2010; and
 - Announced on October 13 that the Government would not be renewing Local Area Agreements from April 2011, that the National Indicator Set would be scrapped and that government would introduce a single list of all the data returns that Councils (not, currently, including partners) must provide.
9. On 4 November 2010 the Secretary of State for Health also announced that the annual assessment of adult social care services would be scrapped. The Ofsted framework remains, to date. A new NHS Outcome Framework for 2011/12 has been launched and new outcome frameworks for Adult Social Care and Public Health are currently out for consultation.
10. Collectively these institutions and processes, together with the Duty to Co-operate on public bodies, formed the bulk of the national performance management framework that encompassed strategic partnerships, including the Stockport Partnership. Their abolition means that strategic partners' contributions to meeting targets that were agreed in the LAA between Stockport Partnership and Government will no longer be assessed by external agencies, and that the Partnership will not be held to account nationally for its performance. The Partnership is free to retain local oversight of existing performance measures where it wishes.
11. Representatives of other statutory sectors, in particular the Police, continue to call for a lessening of inspection and regulation in response to increasing financial pressures.

Proposed future performance monitoring process

12. Partners will be aware that these changes bring to an end to national *performance monitoring* of localities, but not to national *performance measurement*. Government will still require data returns to be submitted nationally, linked to the new departmental business plans, and performance regimes remain in place for many statutory partners. Councillors and strategic partners locally will also still want to know what impact their work is having on people and places in Stockport.
13. At its meeting on 19 January 2011 the Stockport board agreed that it wanted to move away from a retrospective focus to provide greater forward looking strategic leadership. It will do this principally by focusing more on discussion

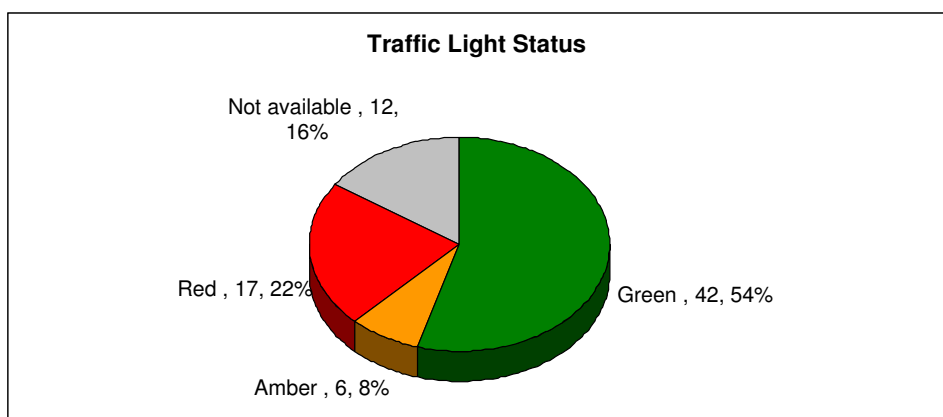
and decision of actions in support of a limited number of priorities, and less on performance monitoring of thematic partnerships.

14. This paper proposes that these two factors be brought together in a simple approach to performance management in which:

- A **partnership-wide** performance report is produced and considered **annually**. Any LAA measures where final position information is not currently available will be included in the 2011-12 annual report;
- That between annual reports **Chairs** of Thematic partnerships and the Chairs of the PSRB and Place Board be **charged with a duty to monitor the performance of their partnership and to escalate issues** of concern to the Stockport Board. The Partnership Office secretariat will meet twice yearly with Chairs of Thematic partnerships to facilitate and support this process;
- That the **Stockport Board**, in addressing priority issues, **create action frameworks that can be monitored** on an on-going basis, and that these are used as a proxy measure to monitor the performance of the strategic partnership its self.

15. The Board are invited to **comment on and agree this basic framework**.

Final position statement on 2008-11 LAA performance

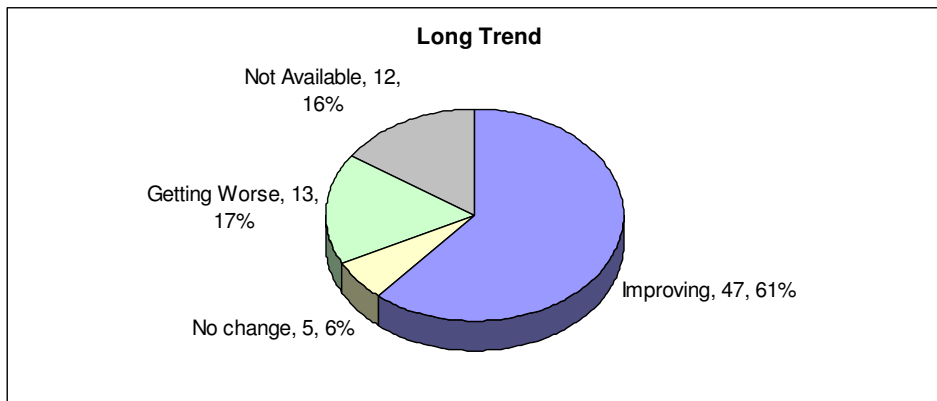


16. Overall performance against target is positive with 42 (54%) of indicators rated as green which means they have either met or exceeded their target.

17. There are 6 measures rated as Amber, which means they are slightly off target.

18. There are a total of 17 (22%) measures rated as Red, which means they are not expected to meet their target. 15 are annual and reflect performance during 2010/11 and 2 are academic measures and represent performance during 2009/10. For the academic measures the latest data represents only the second year of the LAA, final data for the 2010/11 academic year will be available after July 2011.

19. The end of year forecasts for seven measures were not available at Quarter 3 and there were five indicators which could not be calculated because the surveys they are based on have been cancelled. This means performance judgements for twelve measures could not be made.



20. 47 (61%) of measures are improving compared to the previous year. 16 of these measures are academic and relate to performance between 2008/09 and 2009/10. The remaining 31 measure relate to performance between 2009/10 and 2010/11.

21. 13 (17%) of measures are getting worse compared to the previous year. Two of these are academic measures and relate to performance between 2008/09 and 2009/10 and 11 are annual measures and reflect performance between 2009/10 and 2010/11.

22. There are two measures where performance has worsened but they are still on target; these are NI 195b Levels of detritus on land and highways and NI 195c Levels of graffiti on land and highways. This is due to higher than expected performance in 2009/10, whereas performance has now returned back to the 2008/09 levels that were within the LAA target threshold.

23. 5 (6%) of measures are showing no change in performance with the previous year. All of these measures are annual and relate to performance between 2009/10 and 2010/11.

24. A summary of recent performance against Sustainable Communities Strategy priorities is enclosed at **Annex A**.

Further Information

25. A full appendix of detailed performance information has been compiled and made available on the Stockport Partnership website. Partners wishing to further explore performance against specific indicators should consult these documents at http://www.stockportpartnership.org.uk/meeting_papers.html [Item 4 - Appendix 1 and 2].

Recommendations

26. The Stockport Board is asked to:

- a) Note the report and the changes to working practice it describes;
- b) To discuss and agree the future performance management process proposed at paragraph 14;
- c) Review current levels of performance and future risks, and agree any priorities that members would like to see followed up at future Board meetings.

A Healthy Stockport

The withdrawal of health funding and transfer of responsibilities from health to social care, along with significant changes proposed within the Health and Social Care White Paper, mean there is likely to be a period of uncertainty around future health priorities and funding.

An increase is forecast in the level of children and adults physical activity over the year, but some concerns over the latest comparable data on obesity levels amongst both reception and year 6 pupils.

The take-up of self directed support (SDS) and personal budgets for social care continues to increase, with Stockport likely to exceed the national target of 30% and management arrangements in place to maintain this level of performance. A number of risks to health indicators include a fall in 4-week smoking quitters which is likely to be just short of the annual target, although delays in collating data from GP practices suggest final performance may improve. Fewer deaths from circulatory disease are forecast for this year, although this is still likely to fall below target due to previous poor performance.

The number of alcohol related admissions to hospital continues to give cause for concern for residents in deprived areas and amongst 16-19 year olds across the borough.

Breastfeeding rates have fallen significantly this quarter, and reasons for this are being analysed in order to get performance back on track. Although latest data up to Dec 2009 shows a reduction in teenage conceptions, the final figure is still expected to show a decline in performance compared to 2008. The percentage of adults receiving secondary mental health services in paid employment continues to increase.

A Greener Stockport

The redevelopment of previously developed land continues to be prioritised over greenfield sites and the Council is working positively with developers on planning applications such as Cataract Mill in Marple Bridge. Work has also begun on a Housing Land Delivery Plan to bring forward sites for development. The level of local nature reserves has increased with the designation of Tangshutt in Romiley this quarter.

The recycling rate for the quarter is estimated at 47%, with the increase largely due to the implementation of food waste collections in the autumn, which are also having a positive impact on the amount of residual waste being collected. Performance in reducing Co2 emissions is still based on forecast data, with the Climate Change Strategy currently out for public consultation. The carbONcarbOFF campaign generated around 400 contacts to the Energy Advice Centre resulting in 300 referrals to installers for loft and/or cavity wall insulation.

Improvements are reported in the year-end forecasts for congestion levels aided by completion of the improvement work at the A6/Greek Street intersection. Road condition measures are now forecasting to be on target following an additional allocation of £2m along with a £237k DfT grant. The SEMMMS Relief Road A6 to Manchester Airport scheme continues to be a priority for the Council. Following the Secretary of State's announcement in the Comprehensive Spending Review

we are having ongoing discussions with Government officials regarding a funding strategy to deliver the scheme.

A Thriving Stockport

Developer interest in the Town Centre is re-emerging, particularly following the investment in key sites such as Grand Central. Wider retail trends are still a concern, although key moves such as the opening of Primark will make a significant difference. Levels of qualifications and indicators of entrepreneurship are positive, and the Council is receiving good feedback on the support it provides to help local businesses grow. The introduction of the Government's new Work Programme will present a major challenge and agencies are working together to address opportunities and threats.

The Stockport Employment Programme has achieved 430 placements so far and is expected to meet the target of 500 by March. 32 people have entered permanent employment through the programme, and a range of engagement activity has been held with employers and local residents. Worklessness in the worst performing neighbourhoods has decreased, although the rolling average continues to show an increasing gap with the NW average

The overall picture on young people not in education, employment or training (NEET) remains positive, with the numbers likely to reduce for 2010/11. However, Care leavers, young people with learning difficulties/disabilities and those in priority areas who are NEET continue to increase which may be indicative of the economic climate and a reduction in employment and training opportunities.

Improvements are reported in levels of overall and persistent absence in both primary and secondary schools in the last academic year. There is a risk to the attainment of looked after children due to a number of placement changes although these young people are being fully supported by the virtual team.

A Safer, Stronger Stockport

Perception measures are not available for 2009/10 but will be collected via the Citizens Panel in the spring and reported in the summer. The third quarter saw the launch of the 'Safer in Stockport' initiative, showing how the Council and Police are working with local communities to help create safer places, and this has been reflected in some particularly impressive reductions in crime rates during 2010.

2010 has shown a 26% reduction in serious violent and acquisitive crimes compared to 2009. Assaults (down 12%), vehicle crime (-29%), robbery (-13%), burglary (-24%) and anti social behaviour (-21%) have also shown a fall over the last 12 months. First time entrants to the criminal justice system have reduced from Q2 and the same period in 2009 and are now forecast to achieve target.

Pilot projects are currently being developed as part of Greater Manchester's Community Budgets project to deliver Better Life Chances. Stockport's pilot is based around services for families with complex needs in Brinnington, with a peer review of the scheme planned for February. A linked project, Act Family, is being taken forward by the Place Board to cover all priority neighbourhoods, with efforts currently focused on identifying the cohort of families and relative costs involved.

Activity to engage residents in priority neighbourhoods in the last quarter included a 'Winter Funday' in Adswold & Bridgehall and a second Participatory Budgeting event in Brinnington with over 100 residents voting on the distribution of £27k to 19 local community groups.