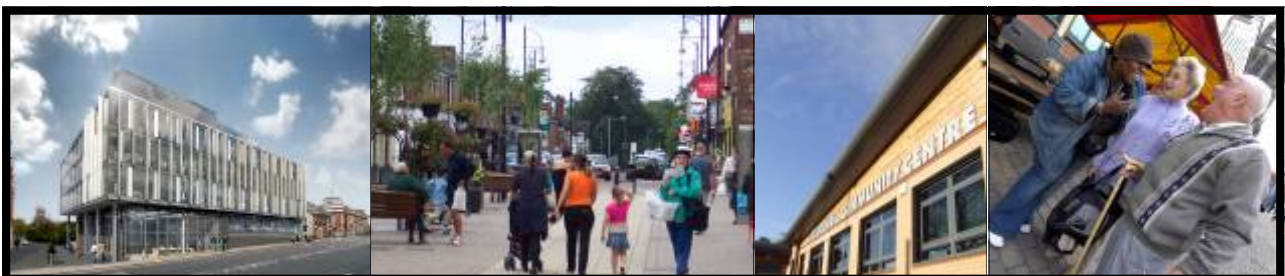




The Stockport Partnership Annual Report 2008/09

Summary



There have been a number of significant developments to the Stockport Partnership in 2008/09 which strengthened partnership working arrangements and the effectiveness of the partnership.

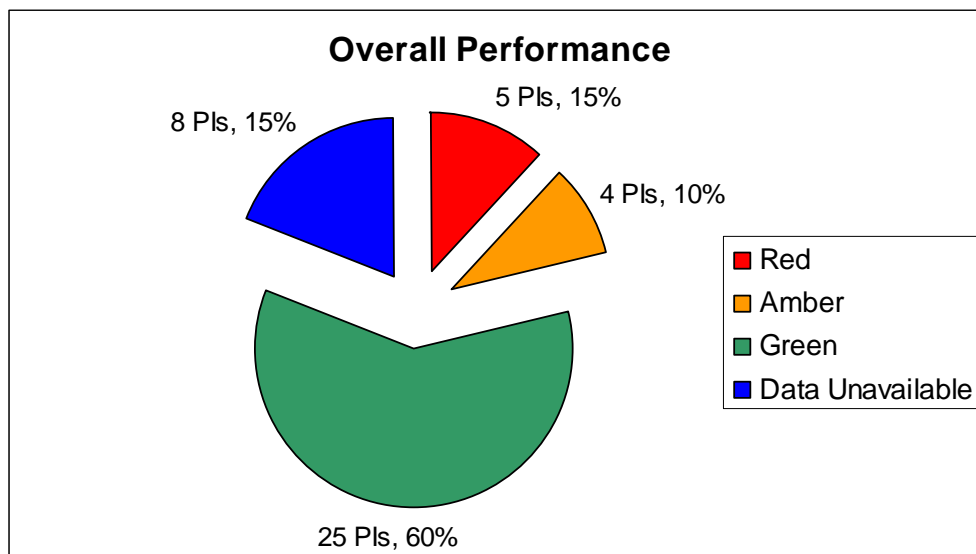
The establishment of an Environment Partnership, and development to the Stronger Communities Partnership and the Children's Trust have enhanced our partnership governance arrangements.

The establishment of a Partnership Office, funded by the LAA Performance Reward Grant has provided dedicated resources to support the Partnership Board, develop the Community Strategy, co-ordinate the LAA and join up our approach to cross cutting issues.

A high profile 'Stockport Boost' campaign to mitigate the impact of the recession for businesses and communities in Stockport has been launched. £840,000 of LAGBI funding has been identified to support businesses and communities through the recession and a decision about how to allocate this funding is due in July.

Participation in the CAA Pilot in summer 2008 allowed Partners to focus on areas for further improvement, in particular our approach to tackling inequalities, which has been strengthened through the development of the Neighbourhood Renewal Framework.

Overall performance has been positive. The majority of the 2006-9 LAA measures were achieved. 8 out of 11 groupings achieved 100% of target, and we anticipate that we will receive 86% of reward monies available (£6.6m). Against our 2008-11 LAA 71% of measures (25/35) for which data is available have achieved target, including all 8 Greener Stockport measures.



A Thriving Stockport

Overview

- Overall performance is good with more than 50% (8/14) indicators on target.
- Worklessness in our most deprived areas has achieved target, which is a significant achievement in this current economic climate.
- Performance has also been positive across a range of statutory education measures. At Key stage 2 (KS2) in both English and Maths targets to increase the percentage of pupils progressing by 2 levels were exceeded.
- There was also positive performance among our more vulnerable young people at both KS2 and GCSE. 16.7% of children in care achieved 5 or more A*-C GCSEs including English and Maths.
- The Children's Trust remains focused on ensuring that high levels of attainment across the borough do not mask underlying inequalities among our most vulnerable young people, and the Making a Difference project is ongoing to identify and support these young people.
- Increasing adult Level 2 and 3 NVQ qualification levels, and reducing the number of young people who are NEET (not in employment education or training) are both proving challenging targets. Additional resources have been identified to carry out a research exercise and evaluation of current best practice in relation to NEET, and the LSC are finalising Train to Gain contracts with providers which will impact on delivery of L2 and L3 qualifications.

Risks to Delivery

NI 153 — Worklessness in the worst performing neighbourhoods

Key Issue: Participation levels

Action being taken:

- ◆ Joint partnership response to the recession
- ◆ Recruitment of a client engagement officer
- ◆ Increased training for frontline staff to maximise referral opportunities

NI 117 — 16 to 18 year olds not in Education, employment or Training (NEET)

Key Issue: Reduced employment opportunities due to the impact of the recession

Action being taken:

- ◆ Refresh of the NEET strategy in light of the recession
- ◆ Delivery of the Improved Life Chances and Entry to Employment (E2E) projects
- ◆ Recruitment of an officer for 3 months to implement the findings from the Care to Learn research project.

Projects

- ◆ **Stockport Into Work** - The Stockport Into Work project provides employment support, including help with CVs and interview preparation. To date, 117 people have been supported from Incapacity Benefit back into sustained employment.
- ◆ **Construction Intermediate Labour Market (ILM) Project** - An ILM is a combination of training and employment, which moves people off income support and into employment. It is aimed at people who have been out of work for the longest period in local areas with the fewest jobs. In Stockport this project is focussed on providing employment and training in the construction industry for nine unemployed people from Stockport's most disadvantaged areas.
- ◆ **Supporting Teenage Parents** - 103 young parents were supported into accessing higher education.

A Safer, Stronger Stockport

Overview

- Robust and final data are unavailable for a number of safer stronger Stockport indicators, however of the 4 indicators for which data is available 3 are on target. This includes 2 key perception measures: perception that authorities are dealing with anti-social behaviour and crime; and overall satisfaction in the area. Eighty five percent of local people are satisfied with the local area across the borough, however in priority neighbourhoods this figures falls to 67%, and it for these areas that improvement targets have been agreed.
- Following a period of sustained decline acquisitive crime rates are slowly beginning to increase and this indicator has missed it's target due in part to an increase in insecurity and 'bogus official' burglaries which are being addressed by the Doorstep Crime Group. A number of significant arrests have been made.

Risks to Delivery

NI 15 and 16 — Serious Acquisitive Crime and Serious Violent Crime rates

Key Issue: Impact of the recession has caused a recent rise in the number of burglaries

Action being taken:

- ◆ Strategic group has been established and is putting together an action plan

- ◆ Plans are in place to raise awareness with residents
- ◆ Doorstep Crime Group has held a number of extra meetings
- ◆ Greater Manchester Police have made a number of significant arrests

Projects

The Stockport Pyramid Project

The ' Stockport Pyramid Project' is a working partnership targeting local Prolific and Priority Offenders (PPO). The project began in July 2007 in line with the new co-located partnership team known as the Offender Management Unit (OMU) based at Lee Street Police station.

All PPO are assigned a Police Offender Manager who will intensively monitor that individual.

The success stories below highlight some of the good work that the OMU has displayed to date:-

Case study 1 - Was wanted for breach of bail whilst awaiting trial for 6 burglaries. Unfortunately, there was no intelligence or sightings of the offender. An off duty police officer then spotted him. OMU staff set up surveillance in the area in which he had been sighted. He was located and detained. He remains in custody having been given a 21-month sentence.

Case Study 2 - Was released on suspended sentence for 18 burglary offences and was created a PPO on his release. His attitude and behaviour caused the OMU staff serious concerns that he

would re-offend. Therefore, daily visits were implemented and positive relationships were forged with his relatives. However, his behaviour and drug use became more erratic. Over one weekend he stayed out late into the night and his mother noticed the following morning that he had money he shouldn't have had. She called the OMU and the information she gave then linked into 3 robbery offences committed the night before. As a direct result he was arrested and admitted to the robberies.

Had these offenders not been effectively managed by the Offender Management Unit, they would have been free to commit further crimes.

Participatory Budgeting

A 'You Say, We Pay' Participatory Budgeting event was held in the Priority 1 area of Brinnington, attended by over 200 adults and 70 children. This event was about engaging with local people and inviting them to vote on how a budget of £30K should be spent on activities to promote community safety, security and youth diversionary in the area.

A Healthy Stockport

Overview

- Five out of seven healthy Stockport measures for which data is available are on target.
- The number of premature deaths (under 75 years) from circulatory disease has exceeded target, with 10% fewer deaths (258 in 2007 compared to 233 in 2008).
- The number of 4 week 'smoking quitters', a key contributory factor to circulatory disease has missed target. Despite positive progress in our most deprived areas and additional activity to promote take up of services, a drop in demand for smoking cessation services was experienced as we are increasingly targeting a reduced pool of smokers.
- The numbers of people of all ages supported by social services to live independently increased from 3853 in 2007/08 to 4043 per 100,000 population in 2008/09, exceeding the target by 125. This was as a result of expanding community based provision.
- Teenage Conception rates are decreasing but the current rate of decline will not achieve the 2011 target to reduce conceptions by 35% from the 1998 baseline.

Risks to Delivery

NI 112 — Reduction in Teenage Conception Rates

Key Issue: Although there has been a decrease, the measure is currently below target

Action being taken:

- ◆ Improvements targeted at secondary school relationship education
- ◆ Targeted approach being taken in Brinnington, which has the highest rates and where the problem is deeply entrenched.

NI 123 — Number of people quitting smoking for 4 weeks or more

Key Issue: Reduction in the number of people attending smoking cessation services in 2008/09

Action being taken:

- ◆ Invitations being sent out to people who were unsuccessful, to ask them to try again
- ◆ Monthly public awareness events being held in busy town centre locations
- ◆ Refresh of publication materials
- ◆ Targeted approach in Brinnington, which has the highest smoking rates

Projects



Lose the Fags campaign launched in Brinnington

The initiative, called 'Lose the Fags', has been developed by NHS Stockport in close partnership with Brinnington residents, and follows a year of research with smokers and former smokers. This has helped develop new services aimed at helping people who are thinking about giving up smoking.

53% of people in Brinnington are smokers, one of the highest rates in the North West.

As well as being developed in consultation with Brinnington residents, the services on offer will also closely involve them. Local people have been trained to deliver advice and support themselves, including fitness instructors at the Lapwing Centre who have been trained to provide stop smoking advice when people call in to use the gym. Staff at Brinnington Children's Centre will also be able to offer friendly support to parents whose children are using the facilities.

Sarah Clarke from NHS Stockport, said: "We know that many smokers in Brinnington want to give up, and people are four times more likely to stop if they use good quality support."

A Greener Stockport

Overview

- All measures to achieve a greener Stockport achieved target including the number of affordable homes delivered. As a result of early completion of two large affordable homes schemes a total of 146 affordable homes were completed. Government acknowledge this performance can not be sustained and the 2011 target may be re-negotiated.
- The recycling target was exceeded by 4 percentage points (39.25% of waste recycled) following the roll out of blue wheelie bins to more than 30,000 properties.
- Targets were also exceeded for cleanliness measures with just 6% of sites falling below the acceptable standard for litter and 15% for detritus, against targets of 14% and 28% respectively.

Risks to Delivery

NI 170 — Derelict Land

Key Issues:

- ♦ A downturn in housing and other forms of development as a result of the recession
- ♦ The fall in land values making purchasing land difficult

Action Being Taken:

- ♦ Partnership working to try and bring vacant sites back into use
- ♦ Planning Policy restrict greenfield site developments and prioritisation of existing shopping centre development

NI 186 – Percentage reduction in CO2 Emissions in the local authority from the 2005 baseline

Key Issues:

- ♦ 2 year time lag on data availability
- ♦ Final year data will be for 2010 calendar year, won't be available until 2012
- ♦ Very difficult to influence and make an impact

Action being taken:

- ♦ Delivery of the Climate Change programme
- ♦ Feasibility study of small scale hydro electric schemes on Stockport's rivers

Examples of Impact Made

Waste and Recycling

The Community Recycling Team undertook education events including a reward scheme – residents who regularly participated in the kerbside recycling service were entered into a draw to win high street vouchers.

Cleanliness

A dedicated large and small mechanical sweeper has increased sweeping frequencies making significant improvements in the LAA outcomes, along with regular 'walkabouts' to identify problem areas with Stockport Homes. The Council has also committed to the

ENCAMS North West Liveability Programme.



Local Area Agreement Reward Targets

2006-09 Performance Reward Grant

Overall the partnership has successfully achieved the majority of the 2006-09 LAA reward targets.

Of particular note are the achievements in relation to educational attainment, crime reduction and anti-social behaviour, reducing

worklessness, improving the independence of older people, and smoking cessation.

As a result the total projected Performance Reward Grant is currently around £6.6m out of a maximum of £7.7m – representing 86% of the available monies.

Progress against the Current 2008-11 Performance Reward Grant

The performance reward grant fund for Stockport the 2008-11 LAA is £1.7M.

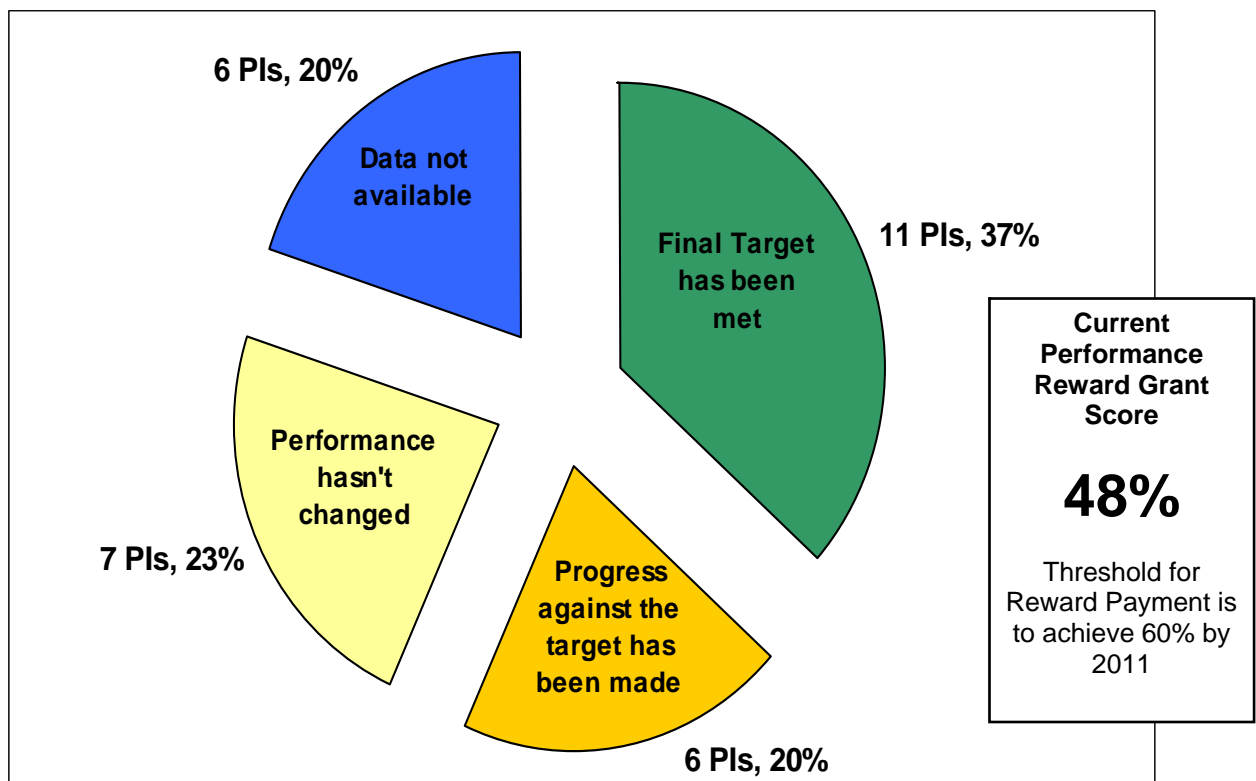
To qualify for this reward Stockport must achieve an average Performance Reward Grant score of 60% or more across all 30 of its designated LAA measures.

Currently, Stockport's score is below this threshold at 48% given we are one third of the

way through our LAA and data is not yet available for 6 PIs this should be viewed positively.

The graph below shows the percentage performance against target for each of the qualifying measures in the Local Area Agreement against the 60% threshold.

Local Area Agreement Performance Reward Grant Current Status



Effectiveness of the Partnership

In 2008-09 the Stockport Partnership focused on developing partnership working arrangements and co-ordinating our approach to cross cutting issues.

Community Strategy

The Partnership Team have revised the Community Strategy following extensive consultation with local people and partners in 2008. The strategy provides the framework around which further development of the LAA and local partnership arrangements can be achieved.

Partnership Co-ordination

The establishment of a Partnership team in December 2008 aims to improve co-ordination of strategic partnership working arrangements, including the LAA. The team includes a Partnership Manager, Performance and Information Officer, and Involvement Officer.

Thematic Partnership Arrangements

There have also been developments to a number of the thematic partnerships which have strengthened partnership working arrangements in the last 12 months. The Stronger Communities Partnership (SCP) was refreshed with a review of the objectives and membership of the partnership. The Stockport Partnership also established an Environment Partnership which met for the first time in November.

Children's Trust

Work has been ongoing to develop the Children's Trust arrangements, so strengthening partnership working in this field. Children's Trusts bring together different

organisations to improve the lives and life chances of children and young people in an area.

Partnership response to recession

The Stockport Partnership is taking a multi agency response to minimising the impact of the recession on Stockport residents and businesses through the Stockport Boost Taskforce. Consisting of Partnership Board representatives, Executive Members and other key partners the Taskforce has met regularly since March 2009.

Joining up engagement

The Stronger Communities Partnership leads on engagement for the wider Stockport Partnership and in the past 12 months has co-ordinated a partnership wide approach to engaging communities.

Tackling Inequalities

During 2008 the Regeneration and Renewal Framework was refreshed and a new strategy developed which has reinforced the strength of partnership working to address inequalities; all partners were involved in the development of the strategy and there was universal sign up to working together to effect improvements.

Refreshing the LAA

The development of the Neighbourhood Renewal Framework coincided with the annual refresh of the LAA; it was therefore timely that developing local and disaggregated indicators to capture local priorities and our commitment to tackle inequalities be the focus of the refresh.

Contact Details

The Stockport Partnership is administered by the Policy Unit at the Council.

You can contact us by:

- ◆ **E- mail:** communitystrategy@stockport.gov.uk
- ◆ **Partnership Website:** www.stockportpartnership.org.uk
- ◆ **Telephone:** 0161 474 3174
- ◆ **Text phone:** 0161 474 3128
- ◆ **Fax:** 0161 474 3009
- ◆ **Write to:** Stockport Council, Policy Unit, Chief Executive's Directorate, Town Hall, Stockport, SK1 3XE